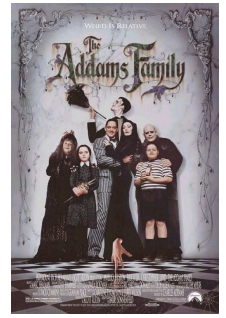




# \*Group Routine\*

Texas A&M Ice Hockey Game vs. UT &  
 Halloween Skating Exhibition  
 Friday, October 22 & Saturday, October 23, 2010  
 US Figure Skating Sanctioned Event  
**DEADLINE TO SIGN UP: SEPTEMBER 9, 2010**



**Help us bring a medley of Halloween favorites to life on ice!**

**WHO:**

Figure Skaters level Basic 8 and up  
 Hockey players level Cub 3 and up



**COSTUME:**

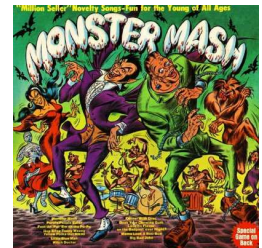
Everyone will need to provide their own costume.

**PROPS:**

We are looking for some Tombstones or other dark Halloween decorations/props that we could borrow for the routine. Please let Megan Jonasson know if you have some or would be interested in making some.

**FEES:**

\$75.00  
 Includes: 9 practices on ice, 3 off ice practices, 2 performances



**PRACTICE INFORMATION:**

We strongly recommend that all practices are attended.

**PRACTICE SCHEDULE:**

Day	Date	Time	On/ Off Ice
Saturday	September 11	10:35 – 11:15am	On
Monday	September 13	5:45 – 6:45pm	Off
Tuesday	September 14	6:55 – 7:25pm	On
Saturday	September 18	10:35 – 11:15am	On
Monday	September 20	5:45 – 6:45pm	Off
Tuesday	September 21	6:55 – 7:25pm	On
Saturday	September 25	10:35 – 11:15am	On
Monday	September 27	5:45 – 6:45pm	Off
Tuesday	September 28	6:55 – 7:25pm	On
Saturday	October 2	7:00 – 7:30am	On
Saturday	October 9	7:00 – 7:30am	On
Saturday	October 16	7:00 – 7:30am	On
* Friday	October 22	A&M Intermission -TBA	Performance
* Saturday	October 23	Halloween Exhibition - TBA	Performance

**PERFORMANCES: 2 thrilling performances!**

\*Friday, October 22, 2010 @ Texas A&M Ice Hockey game vs. UT  
 TBA

\*Saturday, October 23, 2010 @ Halloween Skating Exhibition

Arrive dressed at 6:45pm in costume if this group is your only routine. If you are performing a solo come dressed in that and bring your group costume and make up. Routine will be performed at the end of the exhibition around 7:45pm.



# \*Solo or Duet Routine\*

## Halloween Skating Exhibition

Saturday, October 23, 2010

US Figure Skating Sanctioned Event

**DEADLINE TO SIGN UP: October 1, 2010**

### ELIGIBILITY RULES FOR PARTICIPANTS:

This exhibition is open to all skaters who are current, eligible members of either the Basic Skills program and/or are full members of U.S. Figure Skating.

This exhibition is an opportunity for skaters to bring their Halloween costume to life! The more creative the better. Whether it is your first time to perform or you have been performing for years. We look forward to your performance!

### ENTRIES & FEES:

All entries must be received at Arctic Wolf Ice Center no later than October 1st, 2010. Late entries will be accepted only if time is available, at the discretion of the organizers. Entry fees are per person. The first event is \$35 and each additional event is \$15. The Synchronized Skating Teams entry fee is \$10 per skater.

No refunds after closing date of entries unless Arctic Wolf Ice Center cancels the event. Entry forms must be filled out completely and returned to the Pro Shop. Make checks payable to Arctic Wolf Ice Center. There will be a \$25 fee for returned checks. *Mail Entries: 400 Holleman Dr. East College Station, TX 77840 or Fax with credit card: 979-693-3915*

### AWARDS:

All exhibitors will receive a goodie bag for participating. Parents, grandparents, family, and friends are welcome to throw stuffed animals on the ice at the end of each performance!

### MUSIC:

All music for exhibitors must be on CD-R's clearly labeled with the skater's name. Please note: CD-RW's (re-recordable) should not be used. Music is to be turned in at the registration table at the time of check in. Music will be placed on the registration table at the end of the entire exhibition for skaters to pick up.

### CONTACT:

Megan Jonasson, Figure Skating Director, at [mjonasson@arcticwolfice.com](mailto:mjonasson@arcticwolfice.com)  
or 979-693-3900 x102

### REGISTRATION TABLE:

All skaters must check in at the registration table at least thirty minutes prior to the skater's performance time.

### SCHEDULE:

A schedule of events will be available as soon as possible after all entries have been received. Please make appropriate arrangements to your schedule as the Exhibition will run on Saturday evening from 5:45 – 8:00pm.